

# User Manual

Kitchen Scale    COSMOS



- Thank you very much for selecting the OHS Kitchen Scale COSMOS.
- Please read the user manual carefully and thoroughly to ensure the safe usage of this product and keep the manual for further reference in case you have problems.

## Table of Contents

<b>Safety Instructions</b>	
Warning Symbol .....	2
Safety Instructions .....	2
<b>Product Overview</b>	
Device Components .....	3
Function Indication .....	3
List .....	4
LED Display .....	4
<b>Initial Start-Up</b>	
Insert the Batteries .....	5
Changing the Weight Unit .....	6
Installing the App and Pair-Up .....	7
<b>Operation</b>	
Weighing Mode .....	8
Measuring with Tare Function .....	9
<b>Troubleshooting</b>	
Troubleshooting .....	11
When Data Transmitting .....	12
<b>Specifications</b> .....	13
<b>Maintenance</b> .....	14
<b>Warranty</b> .....	14
<b>Appendix</b>	
FCC Regulations .....	15
EMC Guidance .....	15

♥ Warning Symbols

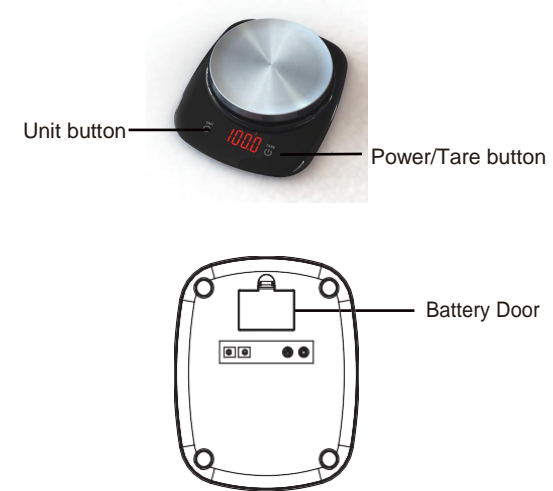
It is important to understand the meanings of the warning symbols to ensure a correct and safe use of the product and protect you and others from injury. You may find the meanings of the warning symbols, which you may see in the label or this user manual, as follow:

	Symbol for "THE OPERATION GUIDE MUST BE READ"		Symbol for "COMPLIES WITH EU REQUIREMENTS"
	The Bluetooth Combination Mark		Symbol for "ENVIRONMENT PROTECTION – Waste electrical products should not be disposed of with household waste. Please recycle where facilities exist. Check with your local authority or retailer for recycling advice"
	Symbol for "DIRECT CURRENT"		
	Symbol for "MANUFACTURER"		
	Symbol for "SERIAL NUMBER"		

♥ Safety Instructions

- Always place the scale on a solid, level and flat surface to weigh.
- Always place the object to be weighed at the center of the weighing platform.
- Do not place any object on the weighing platform before switching the scale on.
- The display may be affected by electromagnetic disturbances such as radios, microwaves or cell phones. If such disturbances occur, remove the source of the disturbance and restart the scale.
- If the scale is not to be used for a long period, please remove the batteries.
- Clean the scale with a slightly damp cloth, DO NOT immerse the scale in water or use chemical/abrasive cleaning agents.
- Keep the scale in a cool dry area.

♥ Device Components



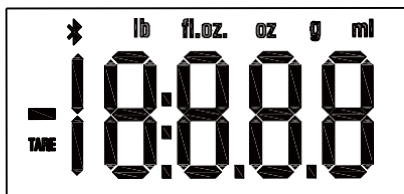
♥ Function Indication

- TARE** Press the Power/Tare button to switch the scale on.  
 Press and hold the Power/Tare button for 3s to switch the scale off.  
 Press the Power/Tare button to switch to weighing mode.
- In weighing mode, press the Power/Tare button to reset the display to zero.
- UNIT** In weighing mode, press to the Unit button to select your desired weight unit.

♥ List

1. Kitchen Scale COSMOS
2. 3xAAA batteries (1.5V per each)
3. User Manual

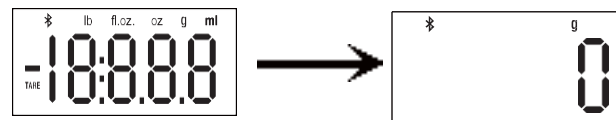
♥ LED Display



<b>TARE</b>	Tare Function	<b>fl.oz.</b>	Weight Unit (Fluid Ounce)
<b>↔</b>	Bluetooth	<b>g</b>	Weight Unit (Gram)
<b>—</b>	Negative Weight	<b>ml</b>	Weight Unit (Milliliter)
<b>lb</b>	Weight Unit (Pound)	<b>oz</b>	Weight Unit (Ounce)

♥ Insert the Batteries

- Open the battery door in the back of the scale.
- Insert the batteries (3x AAA) into the battery compartment according to the polarity indications marked inside the compartment.
- Close the battery door.  
The LED displays as below:

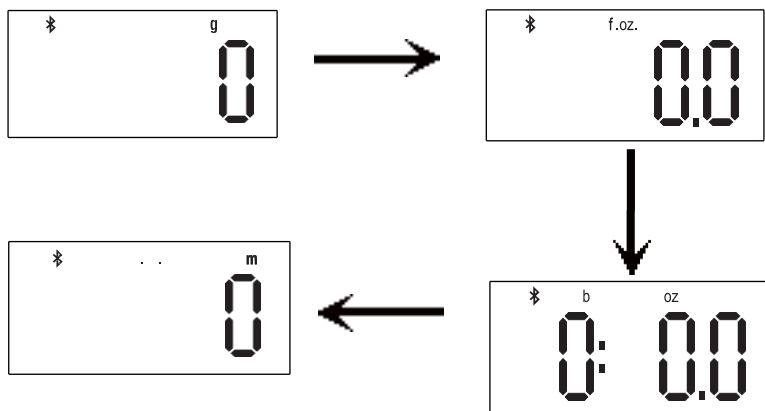


 CAUTION

- When the symbol "Lo" appears, the device will power off soon. Then you shall replace with a new set of batteries. Please replace all three batteries at the same time. Do not mix the old batteries with the new one.
- Worn batteries are hazardous waste. Do NOT dispose of them together with the household garbage. Please refer to the local ordinances and recycling instructions regarding disposal of the worn batteries.
- To achieve the best performance and protect your scale, please use the authorized/specified batteries.

## ♥ Changing the Weight Unit

1. When in the weighing mode, press the Unit button to select your desired unit (g, fl:oz, lb:oz, ml). The units will be displayed in the LED display. (The default unit is g)



### ⚠ CAUTION

When finishing the unit selection, you may start to weigh according to the weighing procedure below.  
If there is no operation, the scale will turn off automatically in about 1 minutes. Or you can press and hold the Power/Tare button for about 3s to turn off it.

## ♥ Installing the App and Pair-Up

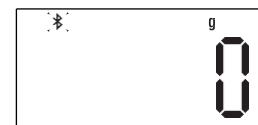
Bluetooth® Smart wireless technology, also known as Bluetooth® Low Energy or BLE, enables the Kitchen Scale to automatically send weight measurements to your smartphone for enhance functionality.

Note: It is only available for the device which supports Bluetooth 4.0 technology.

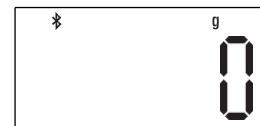
Download <AiFresh APP> version 1.0.5, support IOS system 7.0 and above, iPhone 4s and above; support Android 4.3 and above.



Once the scale body is powered on, the Bluetooth symbol "ⓑ" is blinking, the scale is searching for a mobile device.



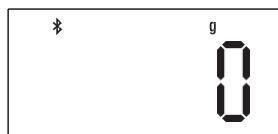
Open the <AiFresh APP> in smart phone and activate the phone Bluetooth function, then the scale connects with the phone automatically. After pairing with the mobile device, the Bluetooth symbol "ⓑ" is always on scale.



## ♥ Weighing Mode

Please choose the unit setting before your first measurement.

1. Place the scale on a solid, level and flat surface to weigh.
2. Do not put anything on the scale.
3. Press the Power/Tare button lightly to enter the weighing mode.
4. You can start to weigh when "0" is shown on the LED.



5. Place the item you wish to weigh onto the scale, the weight data will be shown.



NOTE: When your scale is successfully paired with your smartphone and the Bluetooth is ON, the measurement data will be automatically transmitted to your smartphone via Bluetooth.



### CAUTION

If there is no operation, the scale will turn off automatically in about 1 minutes. Or you can press and hold the Power/Tare button for about 3s to turn it off.

## ♥ Measuring with Tare Function

TARE function allows you to weigh different items consecutively without removing the items from the scale.

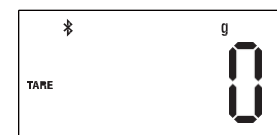
1. When the scale is off, press the Power/Tare button to enter the weighing mode. You can start to weigh when "0" is shown on the LED.



2. Place the first item(ex:150g) you wish to weight onto the scale, the LED will show the weight of the first item.



3. Press the Power/Tare button to reset the display to zero.



4. Now add the second item(ex:190g) to weigh onto the scale. The LED will show the weight of the newly added item.



5. If you remove the second item added to the scale, the LED will again show zero. But if you remove all items from the scale, the LED will show a negative value indicated by a minus sign.



6. When remove all items from the scale, short press the Power/Tare button again, it will clear to zero, and the "TARE" icon will disappear.



7. If there is no operation, the scale will turn off automatically in about 1 minutes. Or you can press and hold the Power/Tare button for about 3s to turn it off.

♥ Troubleshooting

Problem	Root Cause	Solution
The LED display is dim or displays Lo	The power is not enough.	Please replace with 3xAAA new batteries.
The device isn't on when you press the Power/Tare button	The batteries are exhausted	Please replace with 3xAAA new batteries.
	The batteries are not inserted correctly.	Please insert the batteries according to the indication correctly.
The LED displays <b>EEEE</b>	Overload.	Please remove the weight on the scale to protect the loadcells. Suggest buy a new scale with higher weight range.
The LED displays unSt	The weight is unstable when you turn on the scale.	Keep the weight stable when you turn on the scale.

NOTE: When your scale is successfully paired with your smartphone and the Bluetooth is ON, the measurement data will be automatically transmitted to your smartphone via Bluetooth.

♥ When Data Transmitting ...

Problem	Root Cause	Solution
Data transmission failed.	Bluetooth is OFF.	Turn ON the Bluetooth via Settings.
	The App is OFF.	Press the icon to run your App.
	Out of range of Bluetooth transmission.	Place your smartphone closer to the scale.

♥ Specifications

<b>Product Name</b>	Kitchen Scale (COSMOS)
<b>Dimension</b>	Whole size: 210*173x37.5mm (Approximately)
<b>Net Weight</b>	Approx. 0.375kg
<b>Display</b>	Digital LED
<b>Measurement Unit</b>	g, fl:oz, lb:oz, ml
<b>Measurement Range</b>	5000g; 176.4fl:oz; 11lb:0.4oz; 5000ml
<b>Minimal Weight</b>	2g
<b>Division</b>	1g→0.1fl:oz→0.1oz→1ml
<b>Accuracy</b>	F.S*2‰+1d
<b>Working Environment</b>	Temperature: 5°C to 40°C    Relative Humidity: ≤90% RH Atmospheric pressure: 86kPa to 106kPa
<b>Storage Environment</b>	Temperature: -20°C to 60°C    Relative Humidity: ≤90% RH Atmospheric pressure: 50kPa to 106kPa
<b>Power Source</b>	4.5V (3xAAA batteries)
<b>Auto-Off</b>	The scale will turn off in about 1 minutes if there is no operation and the weight data is stable.
<b>Accessories</b>	1. 3x AAA batteries 2. User Manual

About the Accuracy of This Product

This product passes strict inspection before delivery and therefore its accuracy is guaranteed by the manufacturer. Please refer to the above table for the descriptions on accuracy.

**WARNING: No modification of this equipment is allowed.**



## ♥ Maintenance

When carrying out usual maintenance, please ensure practice of the following Do's and Don'ts:

- DO use a dry soft cloth to wipe the dust.
- DO use a wet soft cloth, dipped into water and wrung out, to wipe the dirt. Then use a dry soft cloth to dry up the device.
- DON'T wash the device with water or immerse it in water.
- DON'T use propellant, abrasive or other chemicals to wipe the dirt in avoidance of discolor or malfunction.
- DON'T disassemble this device. If you have any problems, please contact OHS.  
(Please refer to [Warranty](#) for contact information)

## ♥ Warranty

- OHS warrants its products free of defects in materials and workmanship in normal use for a period of TEN years from the date of retail purchase.
- This warranty does NOT cover damages caused by misuse or abuse, including but not limited to:
  - Failure caused by unauthorized repairs or modifications;
  - Damage caused by shock or drop during transportation;
  - Failure caused by improper operation inconsistent with the instructions stated in this user manual;
  - Malfunction or damage from failure to provide the recommended maintenance;
  - Damage caused by improper use of power supply.
- Should this device require maintenance (or replacement at our option) under warranty, please deliver the original package to OPTIMA HOME SCALES prepaid. Please return the store receipt (with the retail purchase date) and a note with reasons to return on it as well.

### OPTIMA HOME SCALES

PO BOX 1526 CUMMING GA 30028 UNITED STATES  
TEL: 888-688-4833  
[www.optimahomescales.com](http://www.optimahomescales.com)

## ♥ FCC Regulations

### FCC User Guide Information

#### Radio Frequency Interface Requirements - FCC

Note: This equipment has been tested and found to comply with the limits for a Class B digital device, pursuant to Part 15 of the FCC rules. These limits are designed to provide reasonable protection against harmful interference in a residential installation. This equipment generates, uses and can radiate radio frequency energy and, if not installed and used in accordance with the instructions, may cause harmful interference to radio communications. However, there is no guarantee that interference will not occur in an installation. If this equipment does cause harmful interference to radio or television reception, which can be determined by turning the equipment off and on, the user is encouraged to try to correct the interference by one or more of the following measures:

- Reorient or relocate the receiving antenna;
- Increase the separation between the equipment and receiver;
- Connect the equipment into an outlet on a circuit different from that to which the receiver is connected;
- Consult the dealer or an experienced radio / TV technician for help.

#### FCC Radiation Exposure Statement:

This equipment complies with FCC radiation exposure limits set forth for an uncontrolled environment.

This transmitter must not be co-located or operating in conjunction with any other antenna or transmitter.

#### Radio Transmitters (Part 15)

This device complies with Part 15 of the FCC Rules. Operation is subject to the following two conditions: (1) this device may not cause harmful interference, and (2) this device must accept any interference received, including interference that may cause undesired operation.

CAUTION: The user is cautioned that changes or modifications not expressly approved by the party responsible for compliance could void the user's authority to

## ♥ EMC Guidance

1. MEDICAL ELECTRICAL EQUIPMENT needs special precautions regarding EMC and needs to be installed and put into service according to the EMC information provided in the ACCOMPANYING DOCUMENTS.
2. Wireless communications equipment such as wireless home network devices, mobile phones, cordless telephones and their base stations, walkie-talkies can affect this equipment and should be kept at least a distance  $d = 3,3$  m away from the equipment. (Note. As indicated in Table 6 of IEC 60601-1-2:2007 for ME EQUIPMENT, a typical cell phone with a maximum output power of 2 W yields  $d = 3,3$  m at an IMMUNITY LEVEL of 3 V/m)