

CRADLE Baby Scale Manual

Keep an accurate weight and height measurement of your child's growth the CRADLE 3-in-1 Digital Baby Scale. With a capacity of 220lbs, this scale is great for babies, infants, toddlers and even adults. This baby scale easily converts to a toddler scale by simply removing the tray. The HOLD function keeps the weight on the display even with your baby moves around. A ZERO function subtracts the weight of diapers or clothing to ensure an accurate measurement.

Characteristics:

- Uses high precision sensors
- White numbers on blue LED display
- Automatic power-off
- Overload indicator
- Unit conversion switches from lbs to kgs
- Super reinforced glass panel support
- Zero function
- Weight holding function
- Large measuring range from 0.2lbs-220lbs
- Height measuring range from 0in-26in

Technological Parameters:

Power supply: 2 AAA batteries
 Measuring range: 0.2lbs-220lbs
 Precision: 0.2lb
 Error range: +/- 0.4lb
 Product weight: 4.4lb



Button Description:

ON/OFF button: Press the button to turn on the scale and long press the button to turn off the scale.

TARE button: A Zero function

Put the loading plate on the scale body and press the TARE button to subtract the weight of diapers, clothing or other things. After it shows

"0" (like the picture below shows), you can place baby on the scale to ensure an accurate measurement.



HOLD button: Weight holding function

Once the weight on the display is stable, you can maintain the weight on the screen by pressing the HOLD button. If you want to cancel the HOLD data, press the HOLD button again.

UNIT button: Unit selection function

You can choose the weighing unit you want by pressing the UNIT button as shown below:



Automatic power-off feature (Power-saving Mode)

The product will turn off automatically if the scale has not been used after approximately 2 minutes (like the picture below):



Batteries Usage:

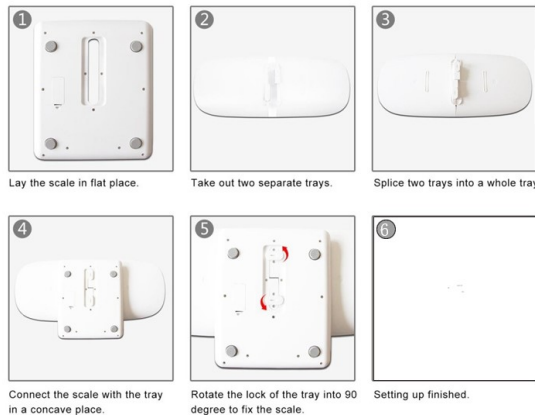
This product is designed for low power consumption and environmentally friendly design. It operates with 2 AAA batteries (please remove the plastic wrapper on the batteries before attempting to insert them in the scale. When the low power warning appears on the display please change to new batteries and dispose of the old batteries responsibly.

How to install the batteries:

Open the batteries cover on the bottom of the scale. Install them as shown in the picture below:



How to set up scale:

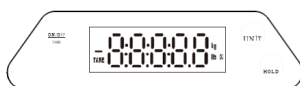


How to use with the tray:

Assemble the tray and scale body as shown:



Place the scale on a level surface
 Press the ON/OFF button to turn the scale on



After the display shows "0" (like the picture below), you can place the baby on the scale to weigh. Press the "UNIT" button to change the unit if necessary.



Place the baby on the scale tray to weigh and the digital display will show the weight of the baby in the unit you choose. Press the HOLD button to capture the weight on the screen once stable. Press again will cancel the held data.

TIP: If you use the scale without the tray, you may hold the baby with the baby's feet on the scale so the weight is distributed evenly.

NOTE:

- Place the scale on a level surface before using.
- Please don't use or store the scale in a high or low temperature or high or low moisture location.
- Do not hit or drop the scale to avoid damage to the scale or the electronic components.
- Use a damp cleaning cloth (no chemicals) to clean the scale. Do not immerse in water.
- This scale is for family usage and not meant to be used in a commercial setting
- Please remove the batteries when storing the scale
- Keep fresh batteries in the scale while using. If weight fluctuates, consider changing batteries.
- Please do not overload the scale to avoid the "ERR" message

Package includes:

Two tray branches and one scale, one manual, two AAA batteries
 Contact us if needed:
 Optima Home Scales PO Box 1526, Cumming GA 30041
 P: 888-688-4833 or by email OHS@optimascale.com